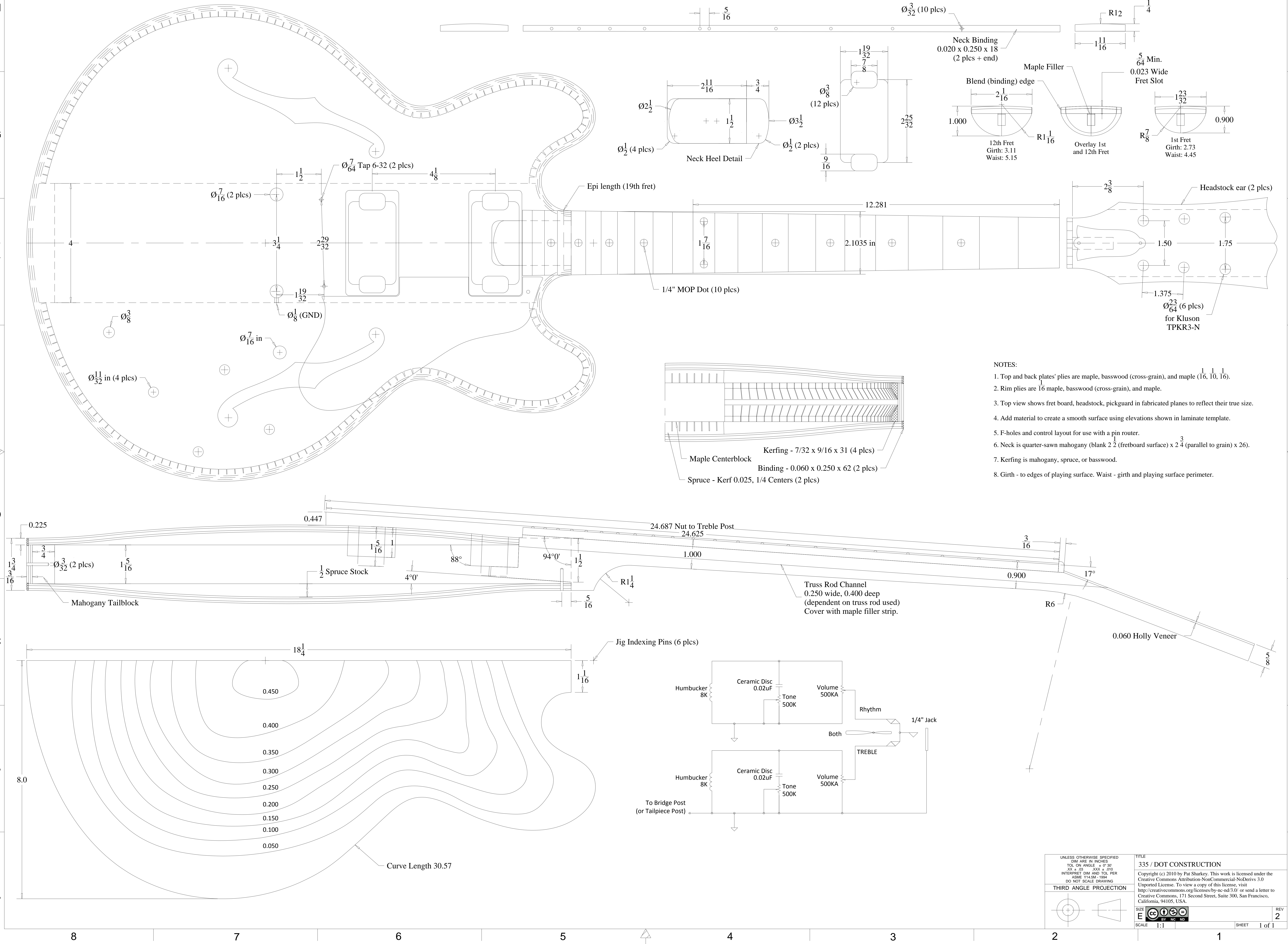


REVISION HISTORY				
REV	DESCRIPTION	INCRP BY	DATE	CHECKED
2	Added strap button and grounding wire holes.	N/A	10MAY2011	NR



- NOTES:
1. Top and back plates' plies are maple, basswood (cross-grain), and maple (1/16, 1/10, 1/16).
 2. Rim plies are 16 maple, basswood (cross-grain), and maple.
 3. Top view shows fret board, headstock, pickguard in fabricated planes to reflect their true size.
 4. Add material to create a smooth surface using elevations shown in laminate template.
 5. F-holes and control layout for use with a pin router.
 6. Neck is quarter-sawn mahogany (blank 2 1/2 (fretboard surface) x 2 3/4 (parallel to grain) x 26).
 7. Kerfing is mahogany, spruce, or basswood.
 8. Girth - to edges of playing surface. Waist - girth and playing surface perimeter.

UNLESS OTHERWISE SPECIFIED
DIM ARE IN INCHES
TOL ON ANGLE = 0° 30'
XX ± .03 XXX ± .010
INTERPRET DIM AND TOL PER
ASME Y14.5M-1994
DO NOT SCALE DRAWING

TITLE
335 / DOT CONSTRUCTION

Copyright (c) 2010 by Pat Sharkey. This work is licensed under the Creative Commons Attribution-NonCommercial-NoDerivs 3.0 Unported License. To view a copy of this license, visit <http://creativecommons.org/licenses/by-nc-nd/3.0/> or send a letter to Creative Commons, 171 Second Street, Suite 300, San Francisco, California, 94105, USA.

THIRD ANGLE PROJECTION

SIZE **E** BY **NC ND**

SCALE 1:1 SHEET 1 of 1

REV 2

