



Floyd Rose Installation

1:1 - IMPERIAL UNITS (IN) - NOT FOR RESALE

Thank you for your purchase - every template and model bought from Electric Herald helps fund the next creation!

Recommendations: Before using these models, it's recommended that you have a strong foundation of lutherie techniques and practices. Most importantly, knowledge of various stringed instruments' setup requirements, hardware options and suitability, proper installation and construction of parts, and proper understanding of your instrument's construction materials (such as tensile strengths, machinability, hydroscopic qualities, etc).

Failure to perform the required research for this foundation of lutherie skills before proceeding with machining and construction could result in a sub-par instrument or parts. Visit www.electricherald.com/lutherie-guides to begin your research.

TEMPLATE SPECIFICATIONS

MAKE	FLOYD ROSE	NUT	ROUTES
MODEL	ORIGINAL	TYPE R3	@ A1 .265" / 6.73 _{MM}
STRINGS	6	WIDTH 1.6875" / 42.85 _{MM}	@ A2 1.165" / 29.6 _{MM}
BODY DEPTH (MIN.)	1.58" / 40 _{MM}	STRING SPACING .2631" / 6.7 _{MM}	@ A3 .44" / 11.18 _{MM}
RECESSED	YES	RADIUS 10" / 254 _{MM}	@ B1 .635" / 16.13 _{MM}
TOP-MOUNT	YES		@ B2 1.11" / 28.19 _{MM}

AVAILABLE FLOYD ROSE NUTS

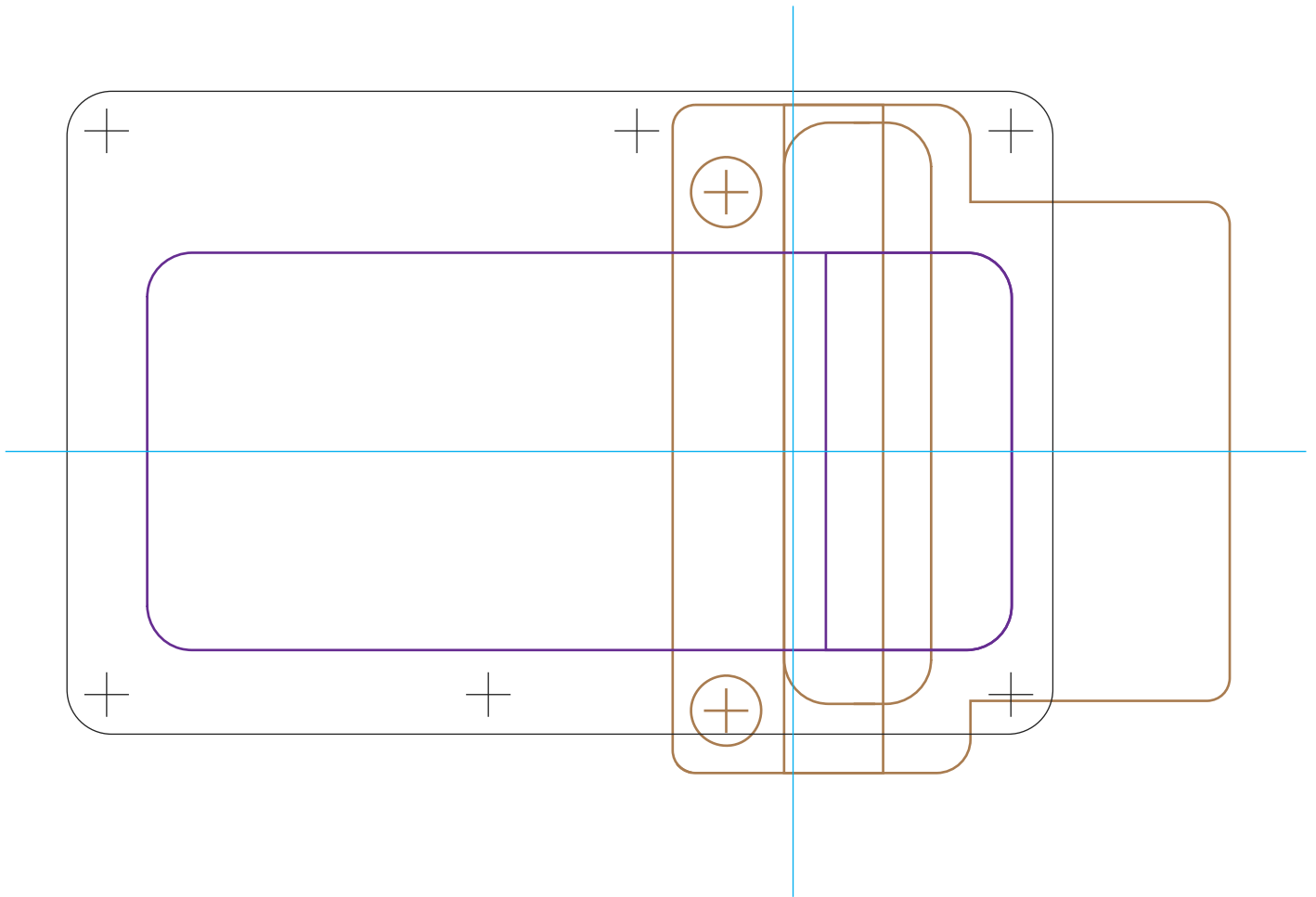
NUT #	WIDTH	RADIUS	HEIGHT @ D	E-E CENTER WIDTH	STRING SPACING	NUT #
1	1.5625" / 39.70 _{MM}	10" / 254 _{MM}	.235" / 6.00 _{MM}	1.309" / 33.25 _{MM}	.2398" / 6.10 _{MM}	NO
2	1.625" / 41.30 _{MM}	10" / 254 _{MM}	.230" / 5.85 _{MM}	1.371" / 34.80 _{MM}	.2502" / 6.35 _{MM}	NO
3	1.6875" / 42.85 _{MM}	10" / 254 _{MM}	.278" / 7.10 _{MM}	1.4155" / 35.95 _{MM}	.2591" / 6.60 _{MM}	NO
4	1.6875" / 42.85 _{MM}	10" / 254 _{MM}	.278" / 7.10 _{MM}	1.4355" / 36.45 _{MM}	.2631" / 6.70 _{MM}	NO
5	1.750" / 44.45 _{MM}	10" / 254 _{MM}	.280" / 7.10 _{MM}	1.491" / 37.90 _{MM}	.2736" / 6.95 _{MM}	NO
6	1.5625" / 39.70 _{MM}	10" / 254 _{MM}	.235" / 6.00 _{MM}	1.309" / 33.25 _{MM}	.2398" / 6.10 _{MM}	YES
7	1.625" / 41.3 _{MM}	10" / 254 _{MM}	.230" / 5.85 _{MM}	1.371" / 34.80 _{MM}	.2502" / 6.35 _{MM}	YES
8	1.6875" / 42.85 _{MM}	10" / 254 _{MM}	.225" / 5.70 _{MM}	1.4355" / 36.45 _{MM}	.2631" / 6.70 _{MM}	NO
9	1.6875" / 42.85 _{MM}	10" / 254 _{MM}	.225" / 5.70 _{MM}	1.4355" / 36.45 _{MM}	.2631" / 6.70 _{MM}	YES
10	1.6875" / 42.85 _{MM}	15" / 381 _{MM}	.240" / 6.10 _{MM}	1.4355" / 36.45 _{MM}	.2631" / 6.70 _{MM}	NO
7-STRING	1.875" / 47.60 _{MM}	10" / 254 _{MM}	.248" / 6.30 _{MM}	B-E 1.633" / 41.50 _{MM}	.2436" / 6.20 _{MM}	NO

Usage Notice: These templates / models are based on existing commercial products, and therefore cannot be used for commercial production. Manufacturing commercial products with these models is strongly discouraged.

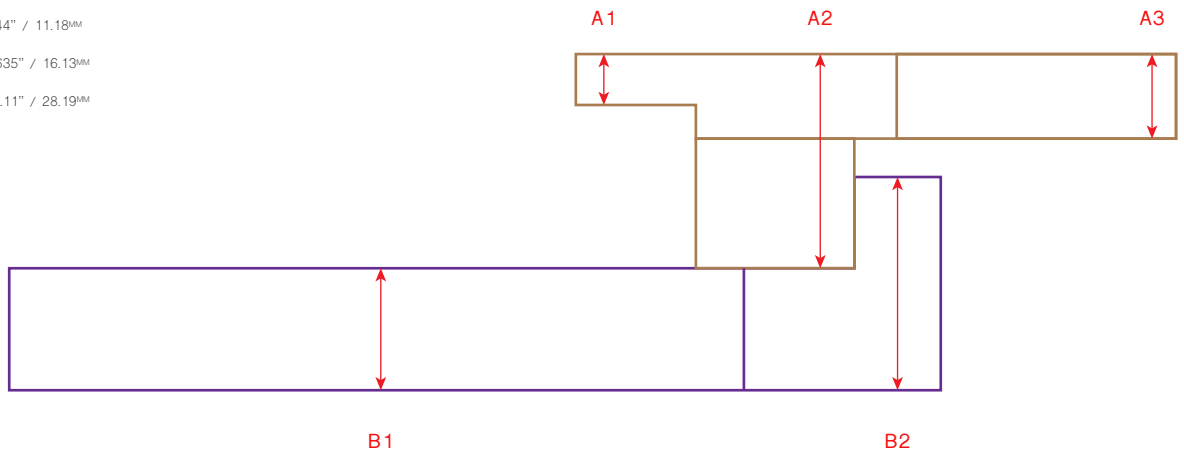
Author Notice: Please remember that while these products are not physically tangible, they require a lot of time and effort to create. They should not be re-distributed or re-sold in any manner. They are for personal usage only. Your cooperation allows for continued development of similar digital products for you and other luthiers/guitar-makers to work with.

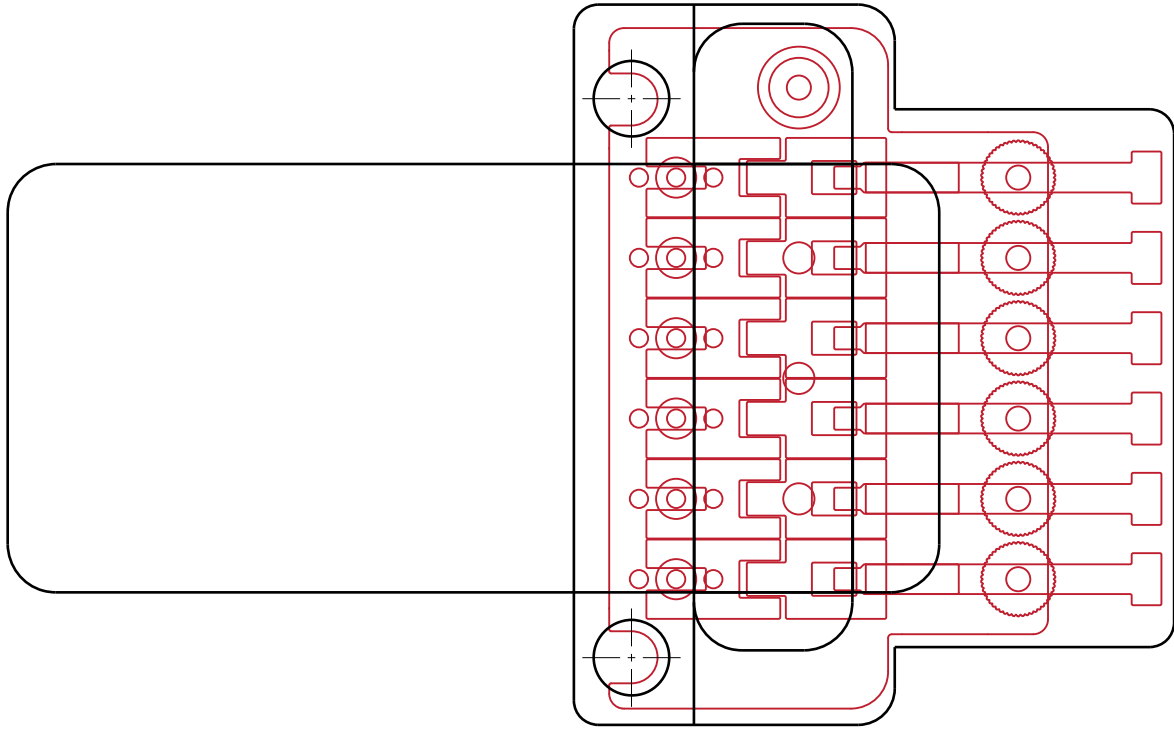
Questions and Comments may be directed to contact@electricherald.com

- CENTER LINE / SCALE LINE
- REAR CAVITY COVER
- TOP ROUTES
- BOTTOM ROUTES

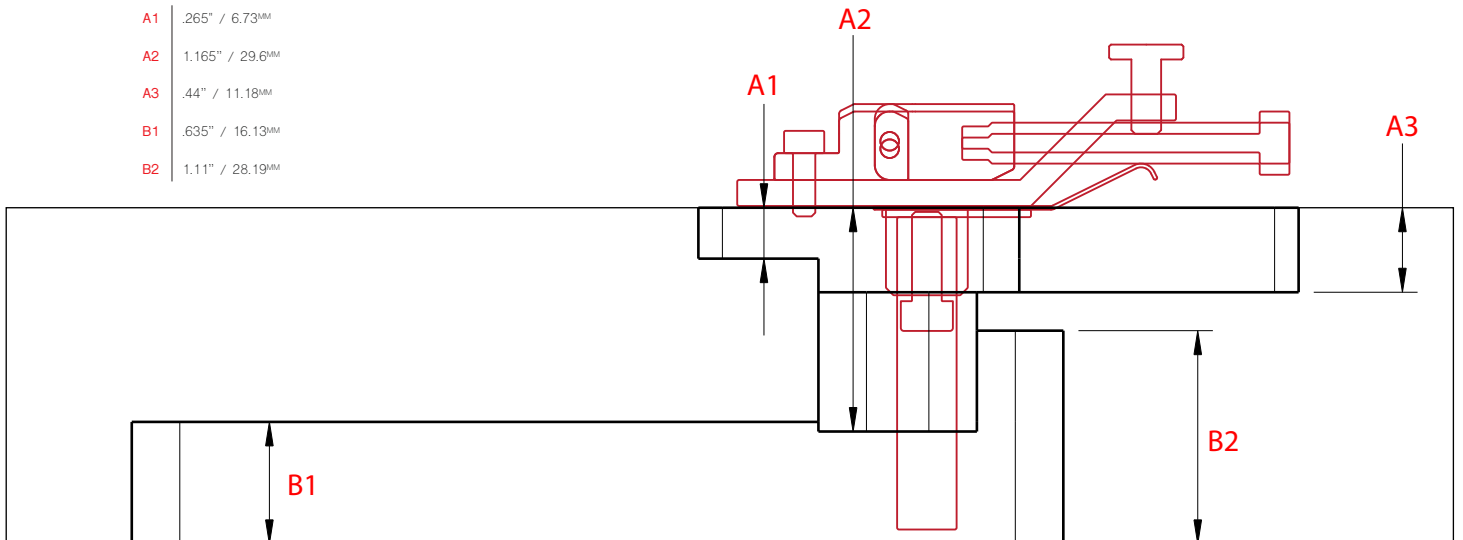


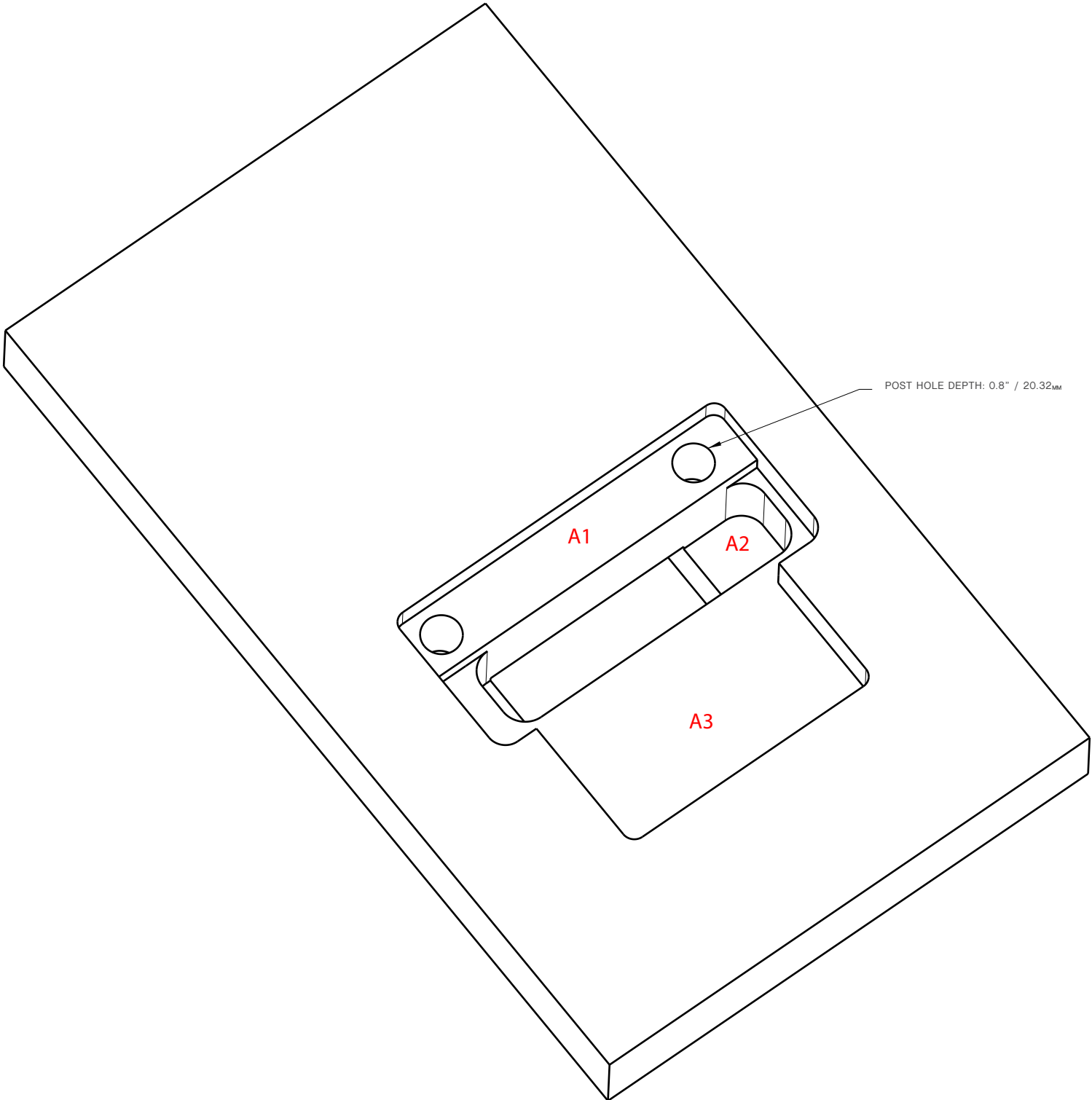
- A1** | .265" / 6.73^{MM}
- A2** | 1.165" / 29.6^{MM}
- A3** | .44" / 11.18^{MM}
- B1** | .635" / 16.13^{MM}
- B2** | 1.11" / 28.19^{MM}



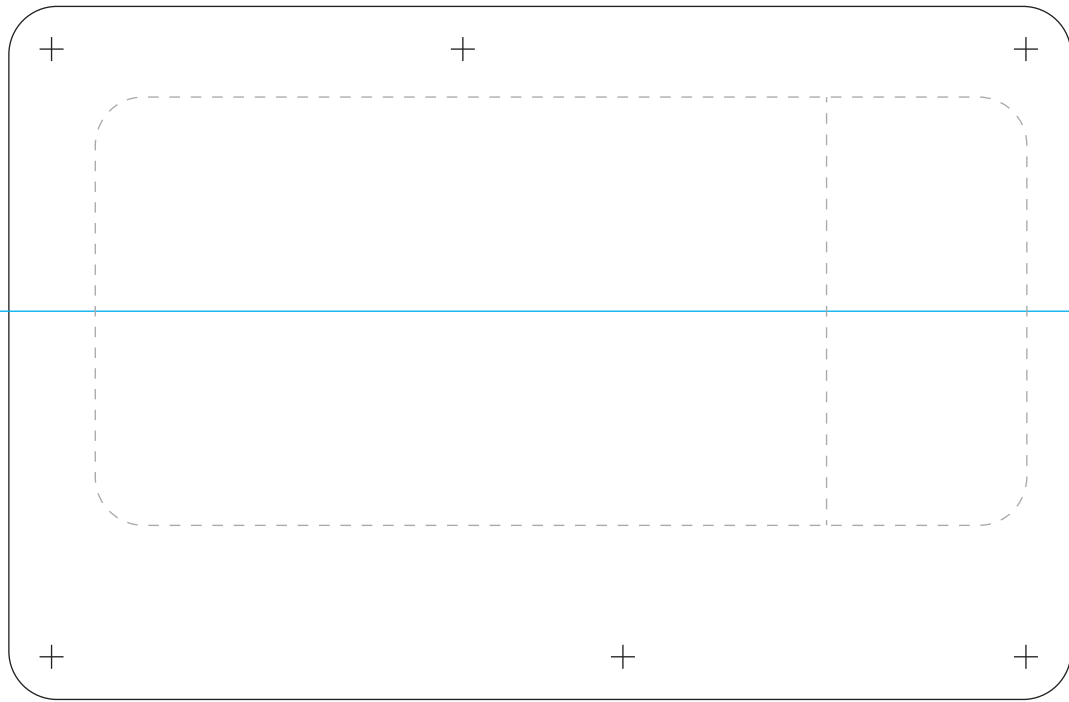


- A1 | .265" / 6.73^{MM}
- A2 | 1.165" / 29.6^{MM}
- A3 | .44" / 11.18^{MM}
- B1 | .635" / 16.13^{MM}
- B2 | 1.11" / 28.19^{MM}





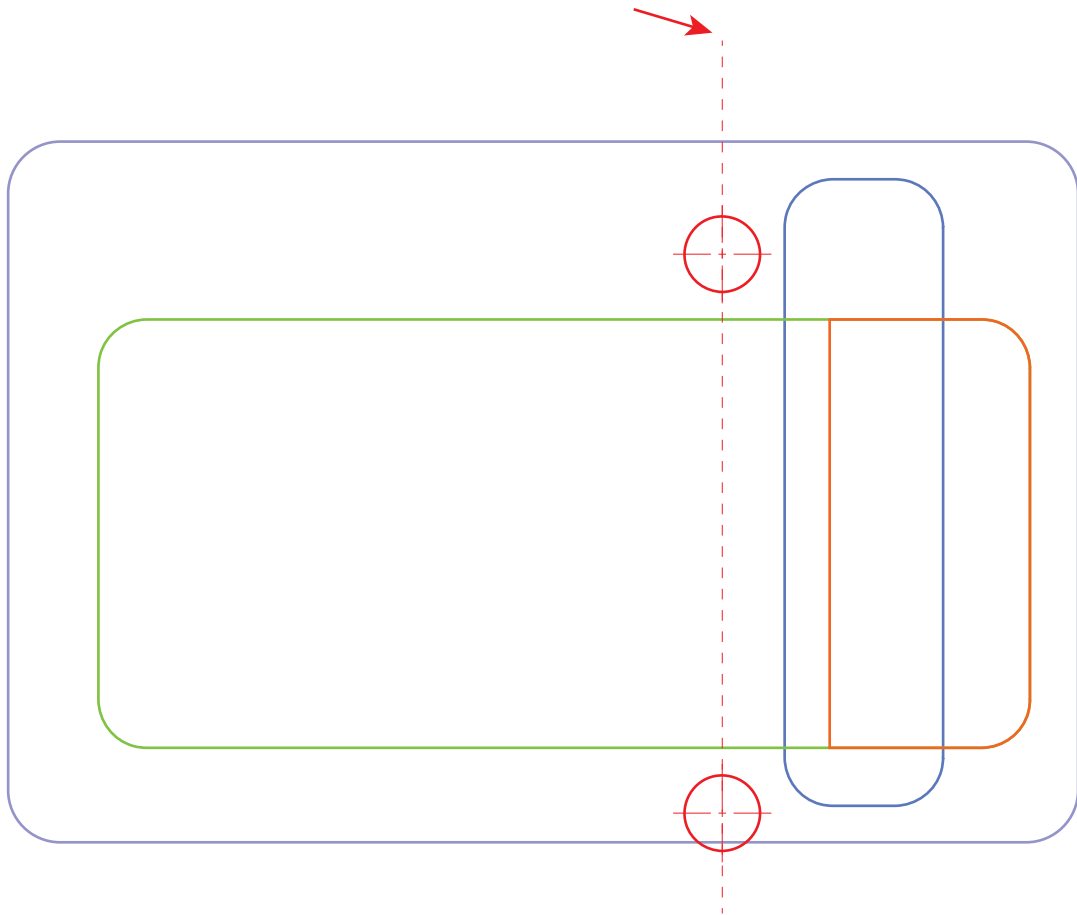
COVER - VIEW FROM REAR



0.01" RECESS - VIEW FROM REAR



Post center line 25" from nut (w/ 25.5" scale guitar)



Underside Route #1 - 0.635"

Underside Route #2 - 1.11"

Top Route #1 - 1.165"

Cavity Cover Recess - Depth of cavity cover material thickness

Side



Top

